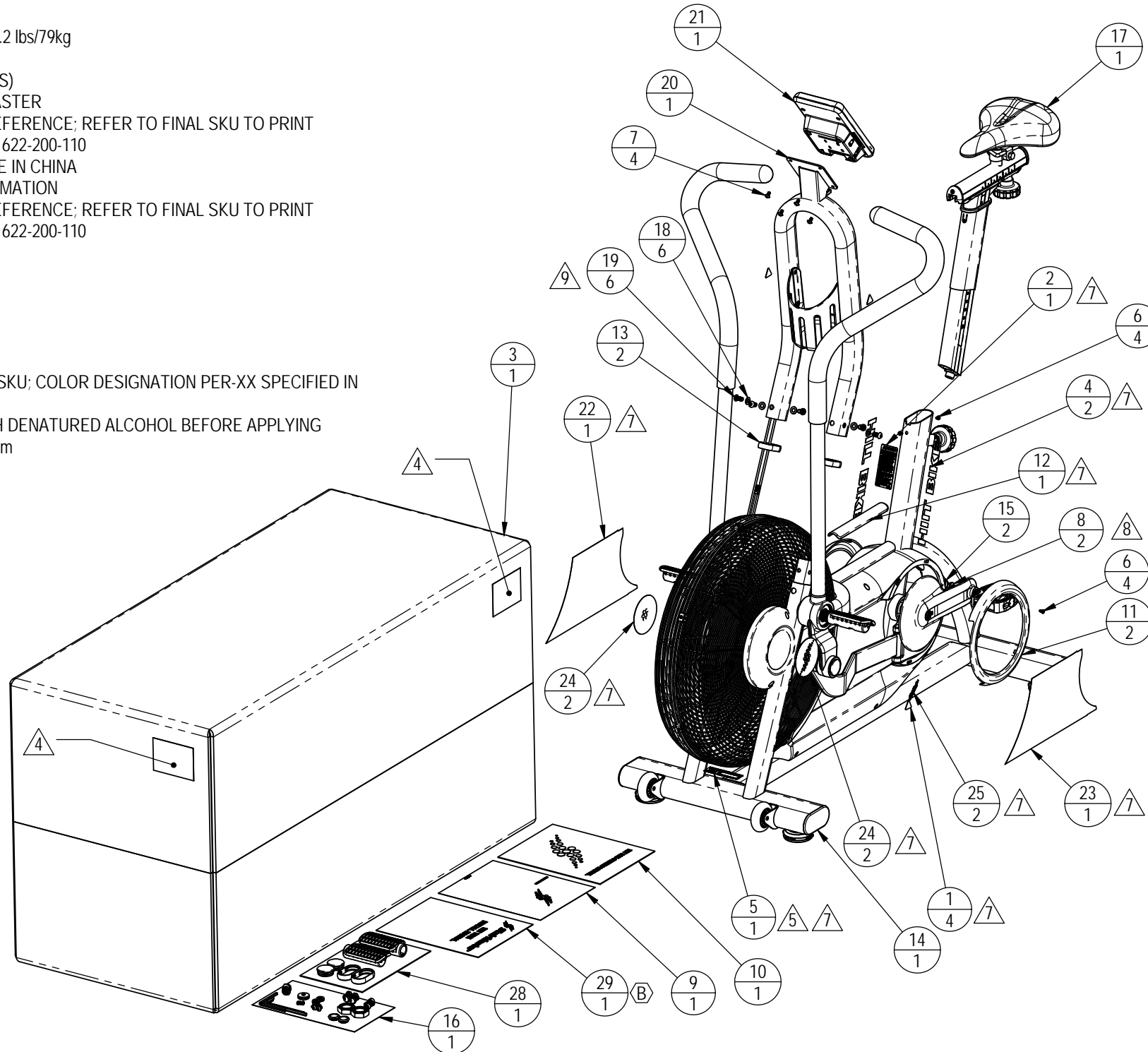


NOTES:

1. BOX SIZE
 - A. L=1265mm
 - B. H=550mm
 - C. W=690mm
2. BOX UNIT GROSS WEIGHT: 174.2 lbs/79kg
3. NET WEIGHT: 123.5 lbs/56kg
4. LABEL INFORMATION (4 PLACES)
 - A. MODEL: HIIT BIKE, STAIRMASTER
 - B. SKU: 9-4650-XXXXXP0 IS REFERENCE; REFER TO FINAL SKU TO PRINT
 - C. SERIAL NUMBER: PER DOC 622-200-110
 - D. COUNTRY OF ORIGIN: MADE IN CHINA
5. PRIMARY SERIAL LABEL INFORMATION
 - A. SKU: 9-4650-XXXXXP0 IS REFERENCE; REFER TO FINAL SKU TO PRINT
 - B. SERIAL NUMBER: PER DOC 622-200-110
 - C. MFG DATE: MM/YYYY
 - D. PHASE: N/A
 - E. CYCLES: N/A
 - F. WATTS: N/A
 - G. VOLTS/AMPS: N/A
 - H. TYPE: N/A
6. COLOR IS SPECIFIED IN FINAL SKU; COLOR DESIGNATION PER-XX SPECIFIED IN SOP 620-200-112
7. CLEAN MATING SURFACE WITH DENATURED ALCOHOL BEFORE APPLYING
8. TORQUE TO 33-37 lb-ft / 45-50 Nm
9. TORQUE TO 10 lb-ft / 13.5 Nm



REVISION HISTORY				
REV	DATE	DESCRIPTION	ECO	BY
A	8/31/2017	PRODUCTION RELEASE	15771	AW
B	10/5/2017	ADD 620-8582	15819	AW

ITEM NO.	PART NUMBER	DESCRIPTION	QTY.	NOTES
1	050-2142	LABEL, WARNING, PINCH POINT, ICON	4	
2	050-2215	LABEL, GENERAL WARNING, E-BTS	1	
3	050-2325	Box, Packaging, Tempest, StairMaster	1	
4	050-5518	LOGO, HIITBIKE, DOWN TUBE	2	
5	050-5487	(Label, S/N, Non-Powered, Primary, Core H&F	1	
6	110-3581	SCREW, M4.2, 8mm, PHT, PH, SS	4	
7	410-3690	Screw, M5x0.8, 10mm, THM, PH, SS	4	REF
8	110-3717	Screw, M8x1.25, 12mm, FCM, HE, AS, E-CB, Gr-12.9	2	
9	620-8223	DOC, WARRANTY, COMMERCIAL, STAIRMASTER	1	
10	620-8245	Manual, Owners, HIIT BIKE	1	
11	718-5487-XX	SHROUD, CRANK RING, TURBO	2	
12	718-5519-XX	STEP, COVER, TUBE, TURBO TRAINER	1	
13	718-5520-XX	RING, BEAUTY, RAIL SPACER	2	
14	718-5789-XX	BASE, ASSY, FAN, HIIT BIKE	1	
15	718-5646	Cap, End, Crank	2	
16	718-5800	Kit, Hardware, HIIT BIKE	1	
17	718-5734	ASSY, SEAT POST, W/ SLIDER, AIRFIT G2.5	1	
18	731-0355	WASHER, PLAIN, M8, NARROW	6	
19	731-5162	Screw, M8x1.25, 16mm, BHC, HK, CS, NP	6	
20	718-5774-XX	ASSY, DISPLAY BASE, HIIT BIKE	1	
21	718-5722	HIIT DISPLAY ASSY.	1	
22	050-5515	LABEL, SHROUD, RIGHT, HIIT BIKE	1	
23	050-5516	LABEL, SHROUD, LEFT, HIIT BIKE	1	
24	050-5517	LABEL, COVER, AXLE, FAN, HIIT BIKE	2	
25	050-5528	LABEL, HIIT BIKE STAIRMASTER	2	
26	718-5820	ASSY, PEDAL, HIIT BIKE, L	1	
27	718-5821	ASSY, PEDAL, HIIT BIKE, R	1	
28	718-5799-XX	Kit, Acc., HIIT BIKE	1	
29	620-8582	MANUAL, INSTALL, HIIT BIKE	1	

DOCUMENT STATUS:

NOTICE OF PROPRIETARY INFORMATION
THIS DOCUMENT SHALL NOT BE REPRODUCED NOR SHALL THE INFORMATION CONTAINED HEREIN BE USED BY OR DISCLOSED TO OTHER EXCEPT AS EXPRESSLY AUTHORIZED BY CORE HEALTH & FITNESS, LLC.

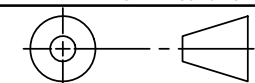
CLASS OF WORK	UNLESS OTHERWISE SPECIFIED DIMS ARE IN mm. TOLERANCES FOR MEASURE OF LENGTH ARE:							ANGLES = ±2°
	0.5 to 3	> 3 to 6	> 6 to 30	> 30 to 120	> 120 to 400	> 400 to 1000	> 1000 to 2000	
FINE	±0.05	±0.05	±0.1	±0.15	±0.2	±0.3	±0.5	----
MEDIUM	±0.1	±0.1	±0.2	±0.3	±0.5	±0.8	±1.2	±2
COARSE	±0.2	±0.3	±0.5	±0.8	±1.2	±2	±3	±4
VERY COARSE	----	±0.5	±1	±1.5	±2.5	±4	±6	±8

MATERIAL
SEE BOM

FINISH
SEE FINAL SKU FOR COLOR

VENDOR: _____ P/N: _____

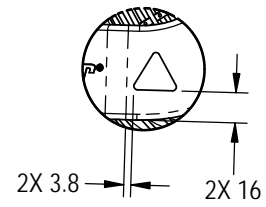
THIRD ANGLE PROJECTION



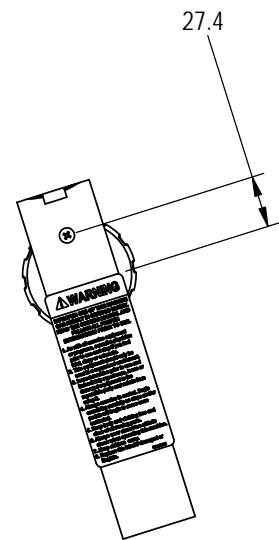
CORE HEALTH & FITNESS, LLC

4400 NE 77th Ave., Suite 300
Vancouver, WA 98662

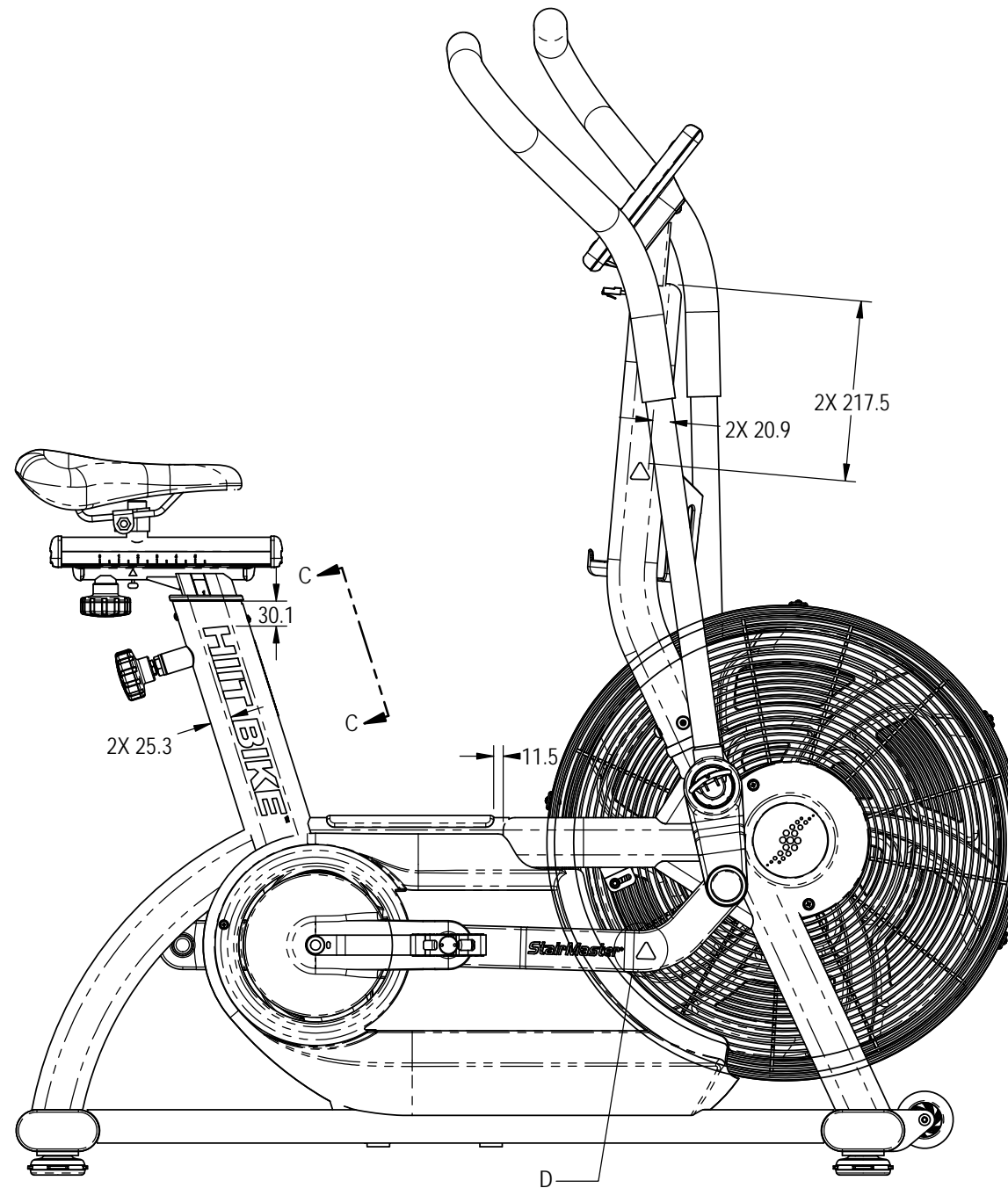
DRAWN	INITIAL AW	DATE 8/31/2017	CORE PART NO 9-4650-XXXXXP0	REV B
CHECKED			TITLE HIIT BIKE, STAIRMASTER	
APPROVED			SCALE: 1:12	SHEET 1 OF 2
	U.O.M.	MM	SHEET SIZE: B	



DETAIL D
SCALE 1:4



SECTION C-C
SCALE 1:4

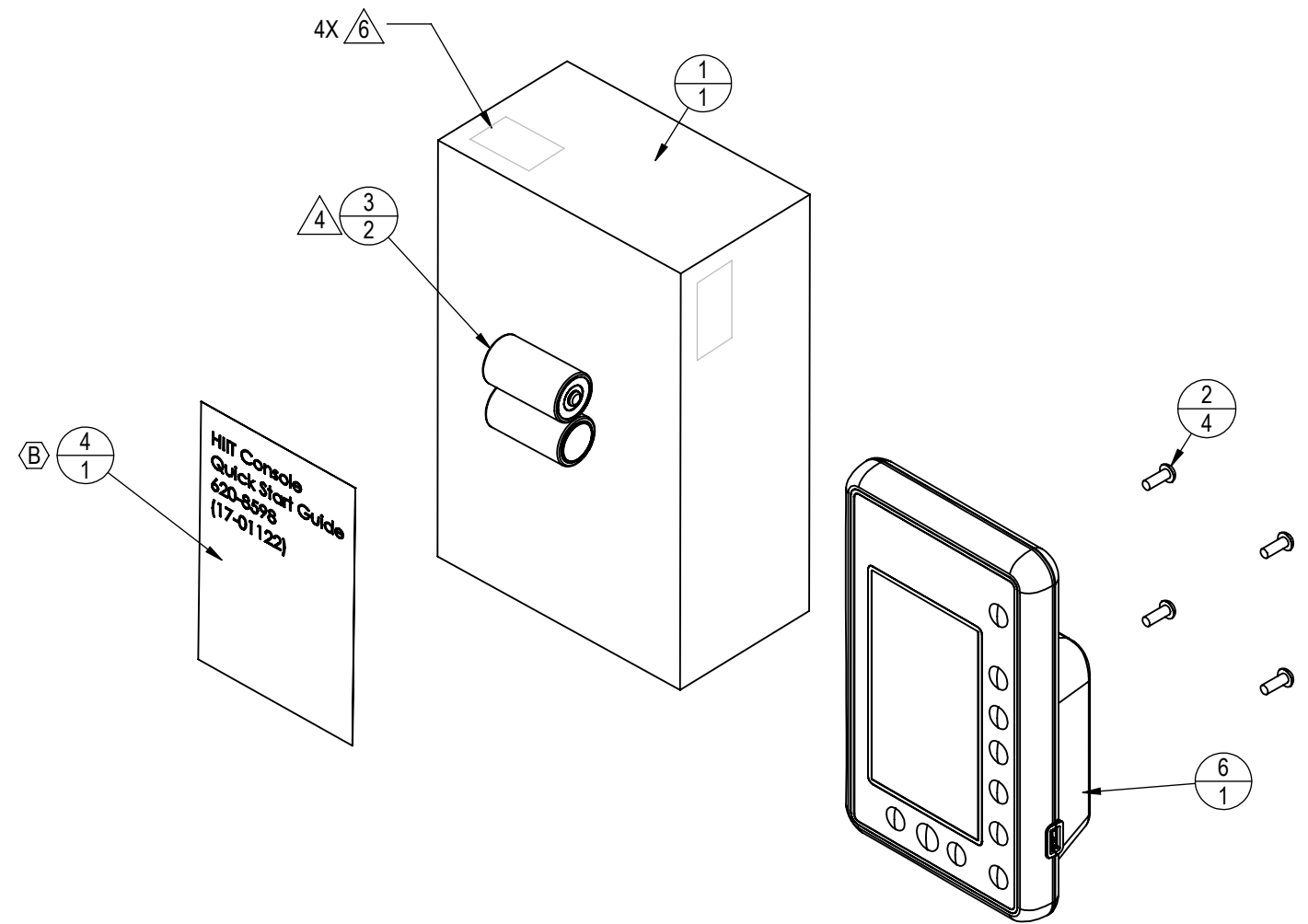
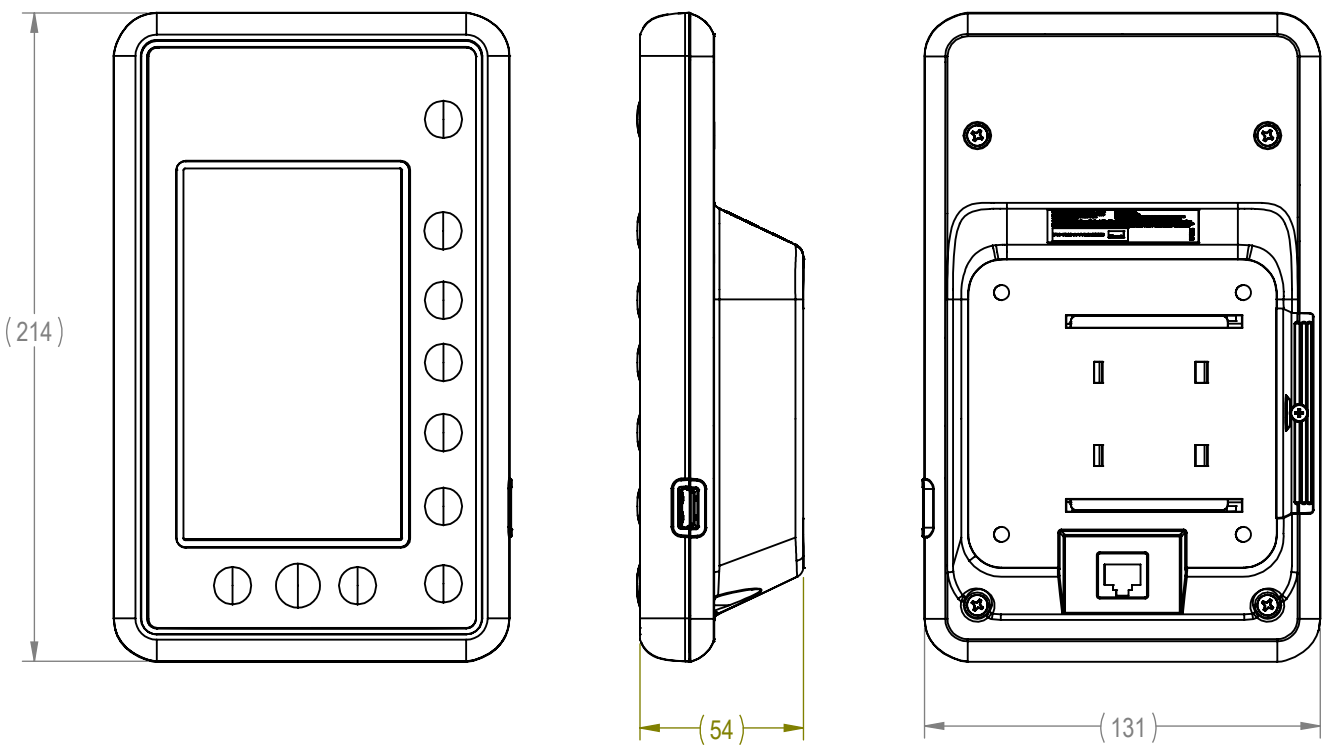


CORE HEALTH & FITNESS, LLC		
4400 NE 77th Ave., Suite 300 Vancouver, WA 98662		
CORE PART NO	REV	
9-4650-XXXXXPO	B	
TITLE		
HIIT BIKE, STAIRMASTER		
SCALE: 1:8	SHEET 2 OF 2	SHEET SIZE: B

NOTES:

1. BOX SIZE:
 - a. L= ~345mm
 - b. H= ~245mm
 - c. W= ~90mm
2. BOX UNIT GROSS WEIGHT: 1.5 lbs / 0.68 kg
3. PARTS TO BE PACKAGED FOR SHIPMENT IN SUCH A MANNER AS TO PREVENT THEM FROM BECOMING DAMAGED DURING SHIPPING / STORAGE.
4. BATTERIES NEED TO BE PACKAGED EXTERNALLY FROM DISPLAY
5. APPLY BOX LABEL, OR PRINT ON BOX, WITH FOLLOWING INFORMATION
 - A. MODEL: HIIT DISPLAY ASSY
 - B. **718-5722** (IN TEXT AND BARCODE)
 - C. SERIALNUMBER (IN TEXT AND QR CODE)
 - D. CORE HEALTH & FITNESS CONTACT INFO:
 CORE HEALTH & FITNES
 440 NE 77TH AVE, SUITE 300
 VANCOUVER, WA 98662, USA
 1-888-678-2476
 - E. ADDITIONAL TEXT:
 DESIGNED IN THE USA
 MADE IN CHINA

REVISION HISTORY				
REV	DATE	DESCRIPTION	ECO	BY
A	9/22/2017	PRODUCTION RELEASE	15815	KA
B	12/18/2017	ADDITION OF QUICK START GUIDE & HIIT SOFTWARE	15867	KA
C	3/20/2018	REPLACE CONSOLE INDIVIDUAL PARTS WITH 718-5956 ASSEMBLY	15923	KA



ITEM NO.	PART NUMBER	Description	QTY.
1	050-5534	BOX, HIIT DISPLAY	1
2	110-3641	SCREW, M5X0.8, 14mm, BHSC, HK, SS	4
3	580-0312	BATTERY, ENERGIZER, C CELL	2
4	620-8598	MANUAL, QUICK START GUIDE, HIIT CONSOLE	1
5	621-0085-PRG	SOFTWARE, HIIT CONSOLE	1
6	718-5956	HIIT DISPLAY ASSEMBLY	1

DOCUMENT STATUS:

NOTICE OF PROPRIETARY INFORMATION
 THIS DOCUMENT SHALL NOT BE REPRODUCED NOR SHALL THE INFORMATION CONTAINED HEREIN BE USED BY OR DISCLOSED TO OTHER EXCEPT AS EXPRESSLY AUTHORIZED BY CORE HEALTH & FITNESS, LLC.

CLASS OF WORK	UNLESS OTHERWISE SPECIFIED DIMS ARE IN mm. TOLERANCES FOR MEASURE OF LENGTH ARE:							ANGLES = ±2°
	0.5 to 3	> 3 to 6	> 6 to 30	> 30 to 120	> 120 to 400	> 400 to 1000	> 1000 to 2000	
FINE	±0.05	±0.05	±0.1	±0.15	±0.2	±0.3	±0.5	----
MEDIUM	±0.1	±0.1	±0.2	±0.3	±0.5	±0.8	±1.2	±2
COARSE	±0.2	±0.3	±0.5	±0.8	±1.2	±2	±3	±4
VERY COARSE	----	±0.5	±1	±1.5	±2.5	±4	±6	±8

MATERIAL SEE BOM

FINISH N/A

VENDOR:

THIRD ANGLE PROJECTION



DRAWN	INITIAL KA	DATE 09/19/2017
CHECKED		
APPROVED		

CORE HEALTH & FITNESS, LLC
 4400 NE 77th Ave., Suite 300
 Vancouver, WA 98662

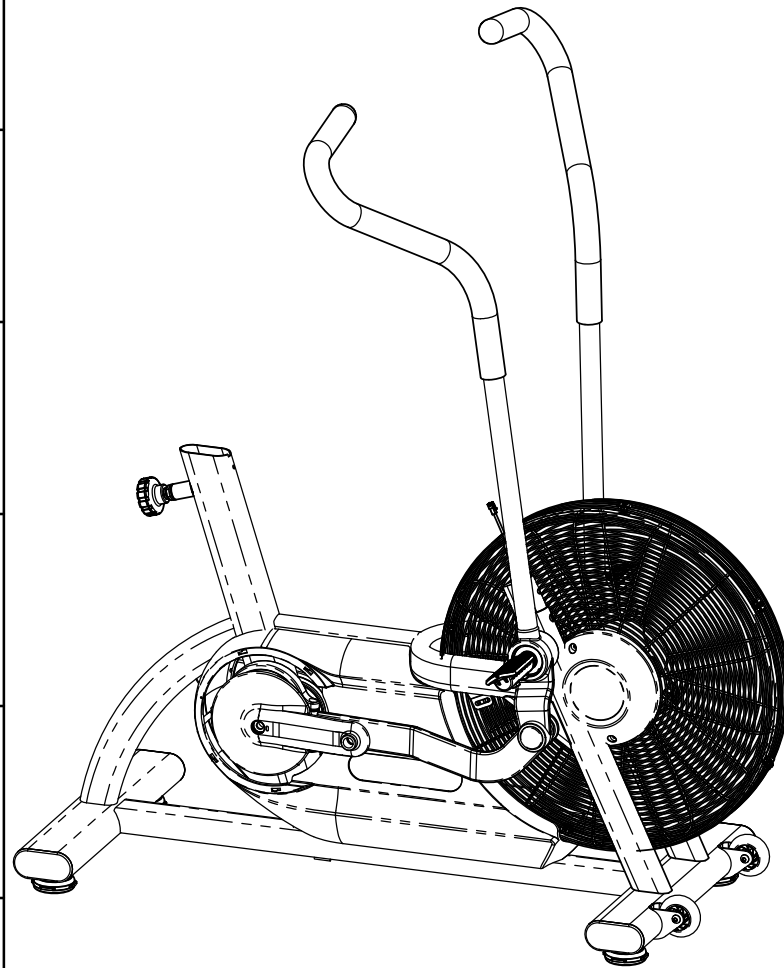
CORE PART NO: **718-5722** REV: **C**

TITLE: **HIIT CONSOLE**

SCALE: 2:5 SHEET 1 OF 1 SHEET SIZE: B

NOTES:
1. COLOR IS SPECIFIED IN FINAL SKU; COLOR DESIGNATION PER-XX SPECIFIED IN SOP 620-200-112

REVISION HISTORY				
REV	DATE	DESCRIPTION	ECO	BY
A	9/5/2017	PRODUCTION RELEASE	15771	AW



ITEM NO.	PART NUMBER	DESCRIPTION	QTY.	NOTES
1	110-3605	SCREW, M4.2, 38mm,PHT, PH, CS, ZP	5	
2	110-3709	Screw, M5x0.8, 10mm, PHM, PH, CS, NKL	4	
3	718-5486-XX	SHROUD, LEFT, TURBO TRAINER	1	
4	740-7850-XX	CAP, PLUG, 38mm-OD	2	REF
5	718-5448-XX	COVER, AXEL, FAN, TURBO	2	
6	718-5485-XX	SHROUD, RIGHT, TURBO TRAINER	1	
7	110-3604	SCREW,4.2M, 19mm, PHTF, PH, CS, ZP	1	
8	140-3613	Key, Parallel, 6mm X 6mm X 12mm	2	
9	740-7555	NUT, AXLE, B/B, M24x1.5	2	
10	740-7553	BEARING, 6005 SERIES, 25x47x12, 2RS	4	
11	140-3554	Retaining, Round Wire, 50 OD X 2.5	4	
12	740-7916	M5 X 16MM, DOWEL PIN	2	
13	718-5639	Assy, Pulley, Trans, Airfit, Gen2	1	
14	130-1814	BELT, 6J460, POLY-V	1	
15	130-1812	BELT, 6PK910, POLY-V	1	
16	718-5378	ASSY, BOTTOM BASKET, TURBO	1	
17	718-5383-XX	Assy, Crank Arm, Left, AirBike	1	
18	740-8145	BOLT, CRANKARM, M8	2	
19	718-5382-XX	ASS, CRANK ARM, RIGHT, TURBO	1	
20	718-5277	NUT, AXLE, B/B, E-/S- BIKE, GEN 2	3	
21	718-5431	BB spacer	1	
22	718-5387	ASSY, TENSIONER, MAIN, AirBike	1	
23	730-0899	Screw, M6x1.0, 12mm, PHM, PH, SS	1	
24	740-7164	Washer, M6, Ø6.5xØ16x1mm, SS	1	
25	120-3247	WASHER, ISO7089, M12	1	
26	110-3706	Nut, Nylor, M12x1.5, CS, ZP, Gr-10	1	
27	718-5614	PULLEY, K6, POLY-V, Ø60mm X Ø25mm	1	
28	718-5615	Spacer, Trans, Airfit, Gen2	1	
29	718-5612	Shaft, Trans, Airfit, Gen2	1	
30	718-5619	Spacer, Trans, Airfit, Gen2	1	

ITEM NO.	PART NUMBER	DESCRIPTION	QTY.	NOTES
31	740-7187	Screw, M6x1.0, 10mm, BHC, HE, SS	2	
32	740-8006	WHEEL, FRONT FOOT, SPINNER	2	
33	740-8007	Bolt, Sex, M6x1.0, Ø8mm x 30mm	2	
34	718-5627-XX	Foot, Adjustable, Plastic	4	
35	740-7558-XX	END CAP, STABILIZER	4	
36	718-5611-XX	WELDMENT, FRAME, G2, AIRFIT	1	
37	110-3653	Screw, M8x1.25, 16mm, HCS, HE, CS, NKL, Gr 10.9	4	REF
38	740-9201	KNOB, POP-PIN, ASSEMBLY, S5/S7	1	
39	718-5562	CABLE, SENSOR, DISPLAY, AIR BIKE	1	
40	140-3490	GROMMET, OD: .44", ID: .25", TH: .25", PU	1	
41	731-0355	WASHER,PLAIN,M8,NARROW	4	REF
42	120-3405	Washer, Wave, Ø0.393" x Ø0.5" x 0.007"THK	2	
43	110-3566	Screw, M8x1.25, 20mm, SHC, HK, AS, NP, EC B, Gr 12.9	2	REF
44	120-3353	Washer, Belleville, Ø8.3 x Ø25 x 3mm	2	REF
45	718-5816-XX	ASSY, HANDLEBAR, UB, LEFT, HIIT BIKE	1	
46	718-5813-XX	HANDLEBAR, UB, RIGHT, HIIT BIKE	1	
47	718-5566-XX	LINK, UPPER BODY, RIGHT, AIR BIKE	1	
48	718-5567-XX	LINK, UPPER BODY, LEFT, AIR BIKE	1	
49	110-3601	PIN, 10MM OD X 75MM, M6 BOTH ENDS	2	
50	110-3600	Screw, M6x1, 12mm, SHFC, HK, AS, NKL, Gr-12.9	4	
51	718-5638-XX	Assembly, Grill, Fan, Airfit, Gen2	1	
52	718-5466-XX	ASSY, FAN, TURBO	1	
53	731-0373	WASHER,PLAIN,M6	6	
54	740-7404	Screw, M6x1.0, 12mm, SHC, HK, SS	6	
55	718-5787	GROMMET, 14MM SLOT, 2 CABLE, HIIT BIKE	1	
56	718-5797	FOOT PEG, HIIT BIKE	2	REF

DOCUMENT STATUS:

NOTICE OF PROPRIETARY INFORMATION
THIS DOCUMENT SHALL NOT BE REPRODUCED NOR SHALL THE INFORMATION CONTAINED HEREIN BE USED BY OR DISCLOSED TO OTHER EXCEPT AS EXPRESSLY AUTHORIZED BY CORE HEALTH & FITNESS, LLC.

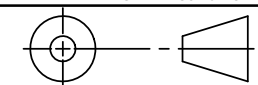
MATERIAL
SEE BOM

FINISH
SEE NOTES

VENDOR:

P/N:

THIRD ANGLE PROJECTION



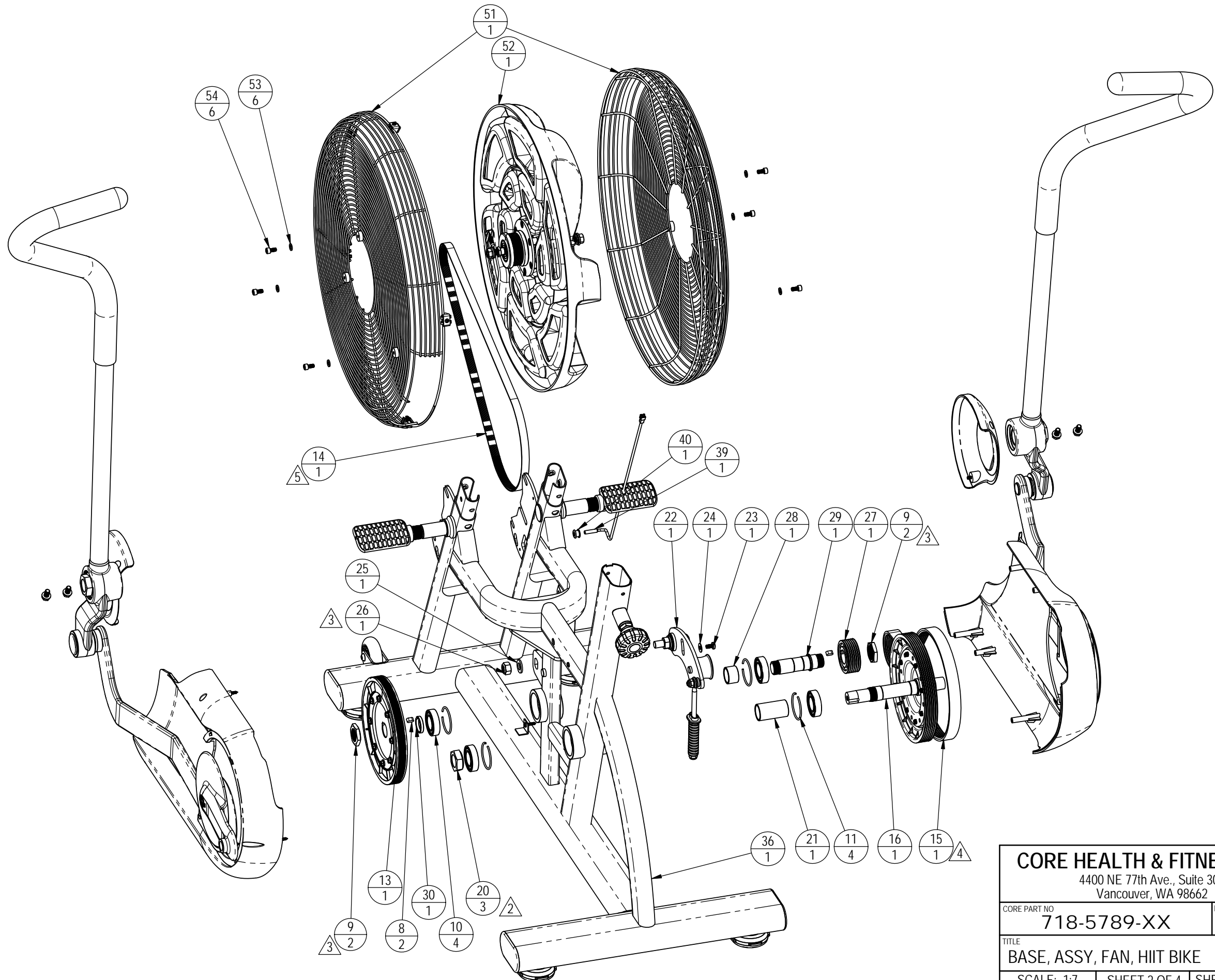
DRAWN	INITIAL	DATE
AW	AW	9/5/2017
CHECKED		
APPROVED		

CORE HEALTH & FITNESS, LLC

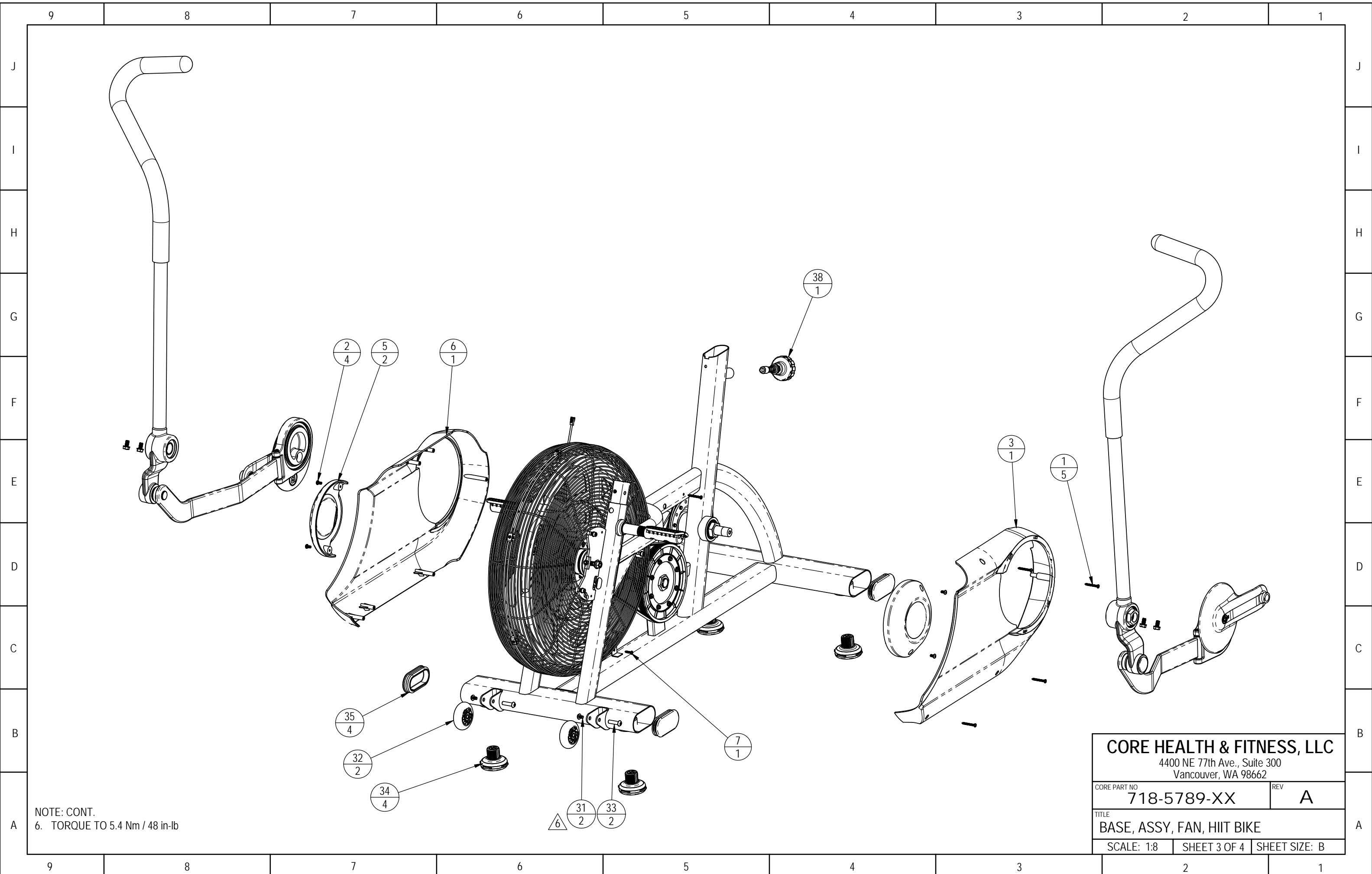
4400 NE 77th Ave., Suite 300
Vancouver, WA 98662

CORE PART NO	REV
718-5789-XX	A
TITLE BASE, ASSY, FAN, HIIT BIKE	
SCALE: 1:12	SHEET 1 OF 4
SHEET SIZE: B	

- NOTES: CONT.
2. TORQUE TO Nm 67.8 Nm / 50 ft-lb
 3. TORQUE TO Nm 54.2 Nm / 40 ft-lb
 4. TENSION BELT TO 130-140 Hz
 5. TENSION BELT TO 95-105 Hz

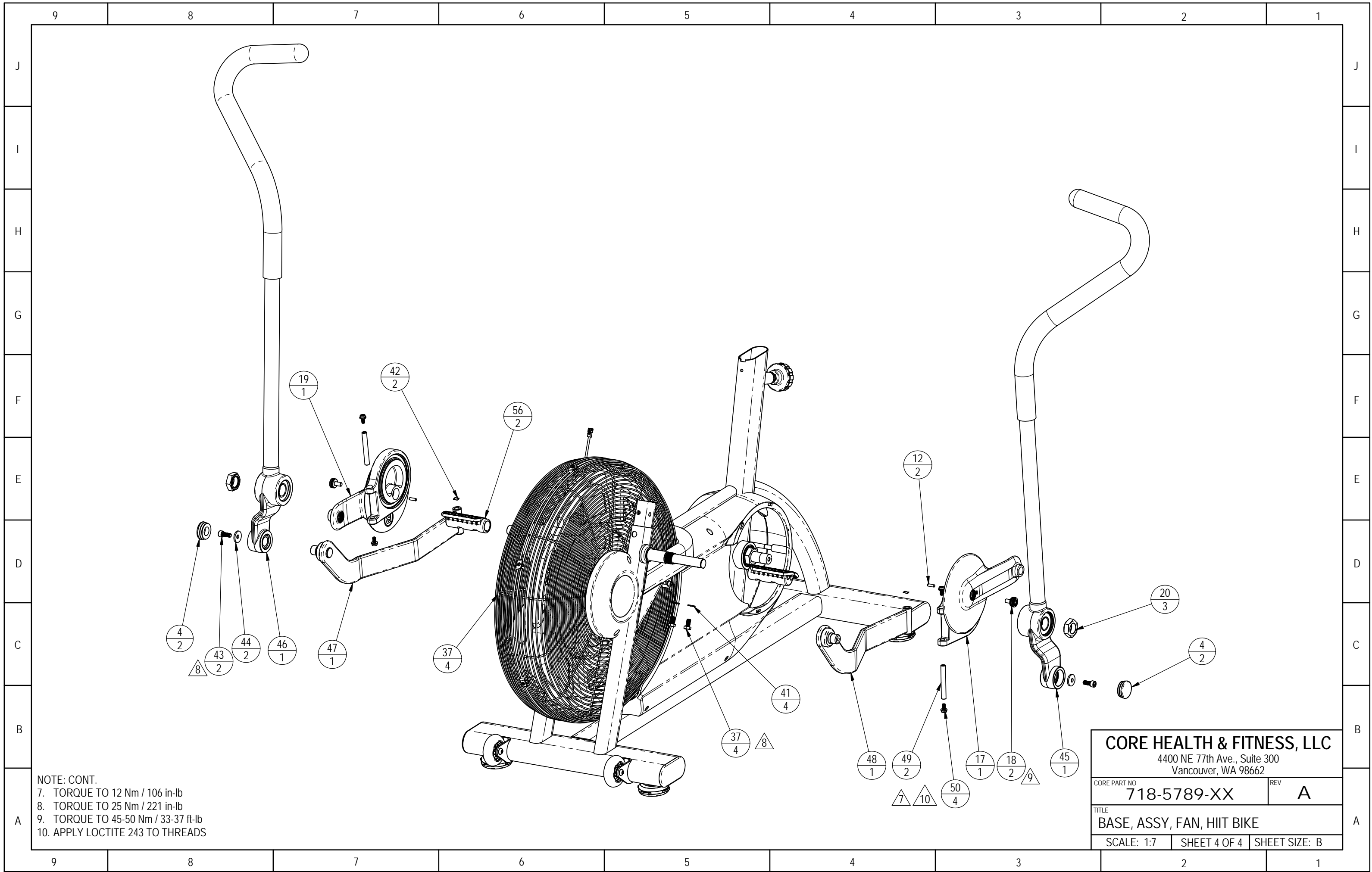


CORE HEALTH & FITNESS, LLC		
4400 NE 77th Ave., Suite 300 Vancouver, WA 98662		
CORE PART NO	718-5789-XX	REV A
TITLE BASE, ASSY, FAN, HIIT BIKE		
SCALE: 1:7	SHEET 2 OF 4	SHEET SIZE: B



NOTE: CONT.
 6. TORQUE TO 5.4 Nm / 48 in-lb

CORE HEALTH & FITNESS, LLC		
4400 NE 77th Ave., Suite 300 Vancouver, WA 98662		
CORE PART NO	718-5789-XX	REV A
TITLE BASE, ASSY, FAN, HIIT BIKE		
SCALE: 1:8	SHEET 3 OF 4	SHEET SIZE: B

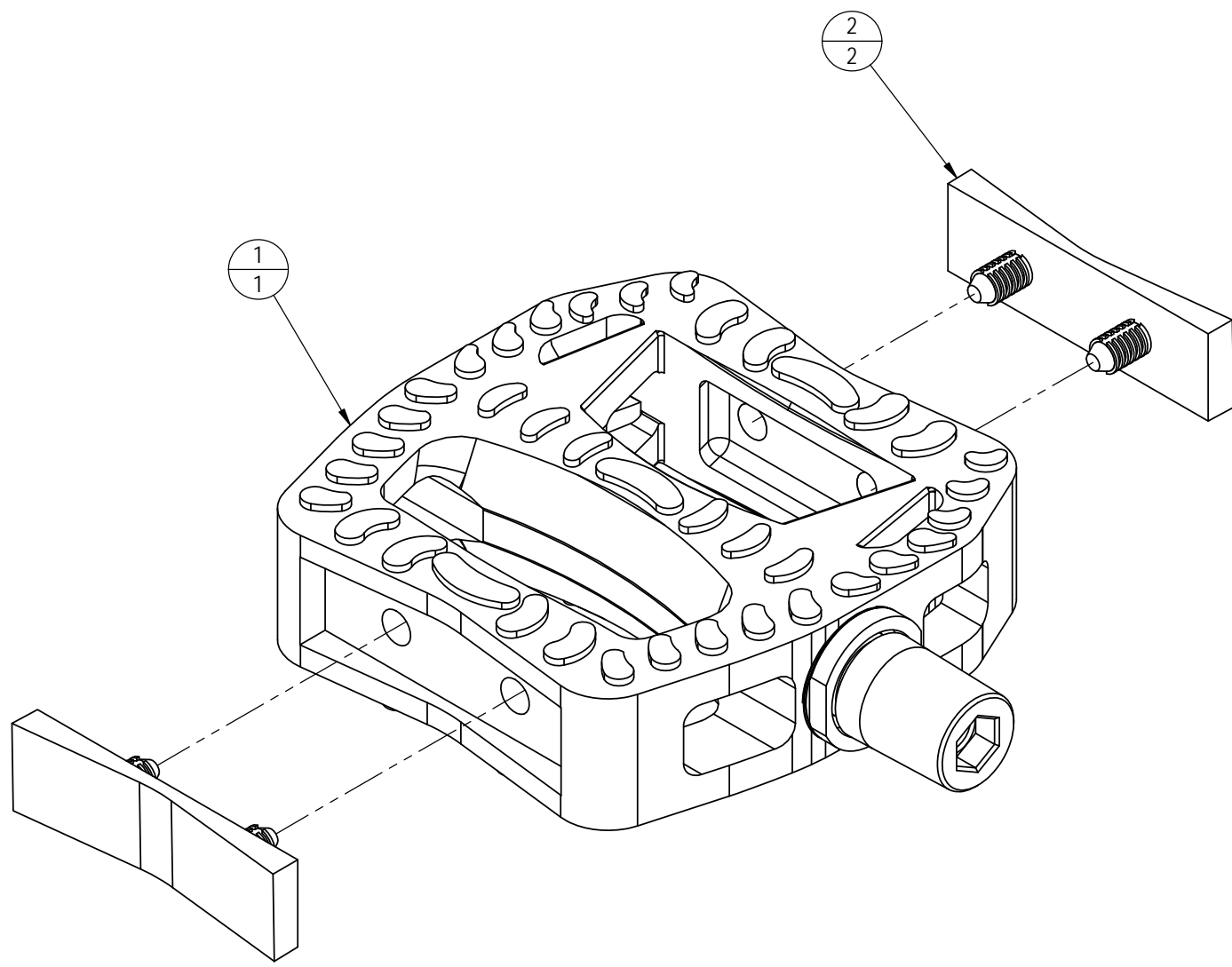


NOTE: CONT.
 7. TORQUE TO 12 Nm / 106 in-lb
 8. TORQUE TO 25 Nm / 221 in-lb
 9. TORQUE TO 45-50 Nm / 33-37 ft-lb
 10. APPLY LOCTITE 243 TO THREADS

CORE HEALTH & FITNESS, LLC		
4400 NE 77th Ave., Suite 300 Vancouver, WA 98662		
CORE PART NO	718-5789-XX	REV A
TITLE BASE, ASSY, FAN, HIIT BIKE		
SCALE: 1:7	SHEET 4 OF 4	SHEET SIZE: B

NOTES:

REVISION HISTORY				
REV	DATE	DESCRIPTION	ECO	BY
A	9/1/2017	INITIAL RELEASE	15771	AW



ITEM NO.	PART NUMBER	DESCRIPTION	QTY.
1	718-5801	PEDAL, HIIT BIKE, L	1
2	718-5822	PEDAL RECESS FILL, HIIT BIKE	2

DOCUMENT STATUS:

NOTICE OF PROPRIETARY INFORMATION
THIS DOCUMENT SHALL NOT BE REPRODUCED NOR SHALL THE INFORMATION CONTAINED HEREIN BE USED BY OR DISCLOSED TO OTHER EXCEPT AS EXPRESSLY AUTHORIZED BY CORE HEALTH & FITNESS, LLC.

CLASS OF WORK	UNLESS OTHERWISE SPECIFIED DIMS ARE IN mm. TOLERANCES FOR MEASURE OF LENGTH ARE:								ANGLES = ±2°
	0.5 to 3	> 3 to 6	> 6 to 30	> 30 to 120	> 120 to 400	> 400 to 1000	> 1000 to 2000	> 2000	
FINE	±0.05	±0.05	±0.1	±0.15	±0.2	±0.3	±0.5	----	
MEDIUM	±0.1	±0.1	±0.2	±0.3	±0.5	±0.8	±1.2	±2	
COARSE	±0.2	±0.3	±0.5	±0.8	±1.2	±2	±3	±4	
VERY COARSE	----	±0.5	±1	±1.5	±2.5	±4	±6	±8	

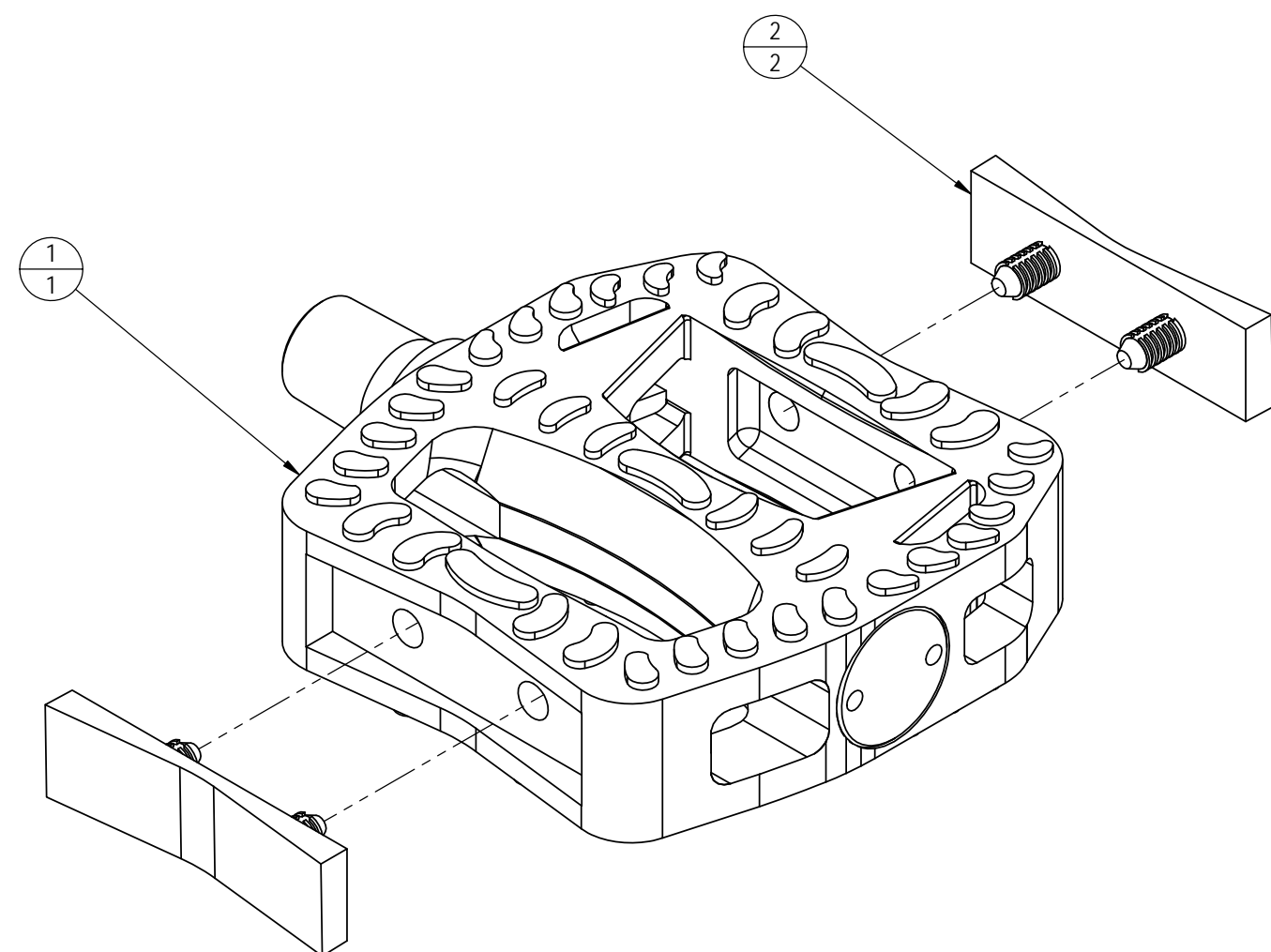
MATERIAL SEE BOM	THIRD ANGLE PROJECTION 	
FINISH N/A	DRAWN AW	DATE 9/1/2017
VENDOR: N/A	P/N: N/A	U.O.M. MM

CORE HEALTH & FITNESS, LLC 4400 NE 77th Ave., Suite 300 Vancouver, WA 98662		
CORE PART NO 718-5820	REV A	TITLE ASSY, PEDAL, HIIT BIKE, L
SCALE: 1:1	SHEET 1 OF 1	SHEET SIZE: B

9 8 7 6 5 4 3 2 1

NOTES:

REVISION HISTORY				
REV	DATE	DESCRIPTION	ECO	BY
A	9/1/2017	INITIAL RELEASE	15771	AW



ITEM NO.	PART NUMBER	DESCRIPTION	QTY.
1	718-5802	PEDAL, HIIT BIKE, R	1
2	718-5822	PEDAL RECESS FILL, HIIT BIKE	2

DOCUMENT STATUS:

NOTICE OF PROPRIETARY INFORMATION
THIS DOCUMENT SHALL NOT BE REPRODUCED NOR SHALL THE INFORMATION CONTAINED HEREIN BE USED BY OR DISCLOSED TO OTHER EXCEPT AS EXPRESSLY AUTHORIZED BY CORE HEALTH & FITNESS, LLC.

CLASS OF WORK	UNLESS OTHERWISE SPECIFIED DIMS ARE IN mm. TOLERANCES FOR MEASURE OF LENGTH ARE:								ANGLES = ±2°
	0.5 to 3	> 3 to 6	> 6 to 30	> 30 to 120	> 120 to 400	> 400 to 1000	> 1000 to 2000	> 2000	
FINE	±0.05	±0.05	±0.1	±0.15	±0.2	±0.3	±0.5	----	
MEDIUM	±0.1	±0.1	±0.2	±0.3	±0.5	±0.8	±1.2	±2	
COARSE	±0.2	±0.3	±0.5	±0.8	±1.2	±2	±3	±4	
VERY COARSE	----	±0.5	±1	±1.5	±2.5	±4	±6	±8	

MATERIAL
SEE BOM

FINISH
N/A

VENDOR: N/A **P/N:** N/A

THIRD ANGLE PROJECTION		
DRAWN	INITIAL AW	DATE 9/1/2017
CHECKED		
APPROVED		
	U.O.M.	MM

CORE HEALTH & FITNESS, LLC
4400 NE 77th Ave., Suite 300
Vancouver, WA 98662

CORE PART NO: **718-5821** REV: **A**

TITLE: **ASSY, PEDAL, HIIT BIKE, R**

SCALE: 1:1 SHEET 1 OF 1 SHEET SIZE: B

9 8 7 6 5 4 3 2 1